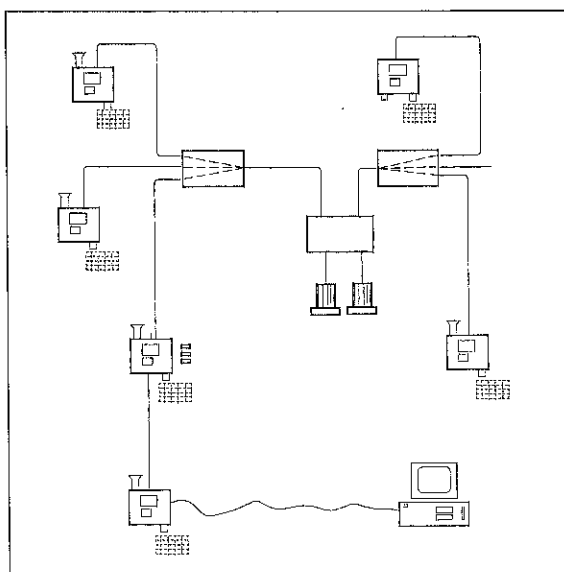


Health Technical Memorandum 2009

Management policy

Pneumatic air tube transport systems



UK Health Departments

Health Technical Memorandum 2009

Management policy

Pneumatic air tube
transport systems

London : HMSO

© Crown copyright 1995

Applications for reproduction should be made to HMSO Copyright Unit
First published 1995

ISBN 0 11 322192 4

HMSO Standing order service

Placing a standing order with HMSO BOOKS enables a customer to receive future titles in this series automatically as published. This saves the time, trouble and expense of placing individual orders and avoids the problem of knowing when to do so. For details please write to HMSO BOOKS (PC 13A/1), Publications Centre, PO Box 276, London SW8 5DT quoting reference 14.02.017.

The standing order service also enables customers to receive automatically as published all material of their choice which additionally saves extensive catalogue research. The scope and selectivity of the service has been extended by new techniques, and there are more than 3,500 classifications to choose from. A special leaflet describing the service in detail may be obtained on request.

About this publication

Health Technical Memorandum (HTM) 2009 gives comprehensive advice and guidance on the design, installation and operation of pneumatic air tube transport systems in healthcare premises.

It is applicable to new and existing sites, and is for use at various stages during the inception, design, upgrading, refurbishment and extension of a pneumatic air tube transport system.

The HTM covers pneumatic air tube transport systems utilising tubes of up to 160 mm diameter. Further information on large bore air tube vacuum systems for use in hospitals for the handling of waste and laundry items is subject to further review.

HTM 2009 focuses on the:

- a. legal and mandatory requirements;
- b. installation;
- c. maintenance;
- d. commissioning;
- e. operation;
- f. management; and
- g. design

of pneumatic air tube transport systems.

It is published as two separate volumes, each addressing a specialist discipline:

- this volume – **Management policy** – outlines the overall responsibility of managers of healthcare premises and outlines their legal obligations in setting up and operating a pneumatic air tube transport system. It also summarises the technical aspects involved;
- **Design considerations and good practice guide** – does not set out to give instruction in design work but highlights the overall requirements and considerations that should be applied to the design of pneumatic air tube transport systems. The chapter on

validation and verification details the requirements for ensuring that the pneumatic air tube transport system is formally tested and certified as to contract and manufactured to the highest level of quality assurance. The importance of commissioning is emphasised and a suggested sequence of tests to be carried out on site is listed. The operational management chapter provides guidance on the day-to-day operation and maintenance of pneumatic air tube transport systems. Safe systems of work, record keeping and legal obligations are included.

Guidance in this HTM is complemented by the library of National Health Service Model Engineering Specifications. Users of the guidance are advised to refer to the relevant specifications.

The contents of this HTM in terms of management policy, operational policy and technical guidance are endorsed by:

- a. the Welsh Office for the NHS in Wales;

- b. the Health and Personal Social Services Management Executive in Northern Ireland;
- c. the National Health Service in Scotland Management Executive;

and set standards consistent with Departmental Cost Allowance Guides.

This HTM was written with the advice and assistance of experts in the NHS and industry.

References to legislation appearing in the main text of this guidance apply in England and Wales. Where references differ for Scotland and/or Northern Ireland, these are given in marginal notes.

Where appropriate, marginal notes are also used to amplify the text.

Contents

About this publication

1. Introduction *page 3*
2. Management responsibilities *page 4*
3. Functional overview *page 7*
4. The suitability of products to be transported *page 13*
5. Security *page 14*
6. Use of pneumatic tubes by pathology *page 15*

References and bibliography *page 17*

Other publications in this series *page 20*

About NHS Estates *page 21*

1.0 Introduction

1.1 Hospital departments are coming under increasing pressure to examine how capital investment projects can be used to improve efficiency in both the provision of services and the use of manpower. Automated transport systems such as pneumatic air tube transport systems have begun to feature prominently in the capital plans of hospitals, and in particular pathology departments, throughout the United Kingdom and abroad as a cost-effective method of improving the quality of service to their customers.

1.2 Pneumatic air tube transport systems provide an efficient, rapid and secure means of transporting various items such as blood and tissue samples, drugs, X-ray films and documents from one department to another. The speed of the system (up to 6 metres per second) considerably reduces the length of time patients and staff have to wait for results. This can often be a major factor in the decision to install a pneumatic communication system.

1.3 In addition to improving turnaround times, pneumatic air tube transport systems also promote a more effective use of ward-based and messenger staff by reducing the amount of time staff spend physically transporting items from one location to another. Nursing staff are therefore able to spend more time with the patient.

1.4 The installation of a pneumatic air tube transport system must be consistent with the overall communications policy of the hospital since it will form an integral part of the information technology network. The physical movement of items through the pneumatic transport system will be recorded electronically via computerised requesting stations located in wards and departments.

1.5 The sophistication and flexibility of pneumatic air tube transport systems means that each individual installation can be tailored to meet the specific requirements of the customer.

1.6 This Health Technical Memorandum (HTM) is equally applicable to both new and existing sites. It gives advice and guidance to health care management, design engineers, estates management and operations managers on the legal requirements, design implications, maintenance and operation of pneumatic air tube transport systems in healthcare premises.

1.7 Current statutory legislation requires both management and staff to be aware of their collective responsibility.

2.0 Management responsibilities

Statutory requirements

Introduction

2.1 So far as pneumatic air tube transport systems are concerned, the chief areas of legislation with which managers should be familiar are health and safety and operator protection.

Health and Safety at Work etc Act 1974

2.2 The largest and most important body of law to be considered by management teams is the Health and Safety at Work etc Act 1974 (the HSW Act) and its various regulations.

2.3 The HSW Act and its regulations require employers to assess the risks to their employees. Attention is drawn to the following with respect to pneumatic air tube transport systems:

- a. the stored energy hazards associated with transport systems;
- b. the infection hazard associated with the microbial pathogens that may be handled by personnel;
- c. the hazard of infection to patients and staff by the inadvertent release of a load;
- d. the hazards associated with the handling of medical samples while loading and unloading;
- e. the hazards associated with radioactivity.

2.4 The guidance given throughout this HTM is designed to ensure that these hazards are minimised and that all procedures comply with the relevant legislation and established good practice.

Management of Health and Safety at Work Regulations 1992

2.5 The Management of Health and Safety at Work Regulations 1992 (SI 1992/2051) expand upon the principles of the HSW Act.

2.6 The core of the Regulations is a requirement of employers to make a systematic assessment of the risks to health and safety to their employees and others arising from work activities.

Workplace (Health and Safety and Welfare) Regulations 1992

2.7 Most of the Regulations deal with the physical requirements of the workplace. Managers concerned with the operation of pneumatic air transfer systems should pay particular attention to the Regulations on maintenance, temperature, cleanliness, room dimensions and space, and traffic routes.

Northern Ireland (NI): The Health and Safety at Work (Northern Ireland) Order 1978

(NI) The Management of Health and Safety at Work Regulations (Northern Ireland) 1992

(NI) The Workplace (Safety, Health and Welfare) Regulations (Northern Ireland) 1993

(NI) The Provision and Use of Work Equipment Regulations (Northern Ireland) 1993

Provision and Use of Work Equipment Regulations 1992

2.8 The Provision and Use of Work Equipment Regulations 1992 (SI 1992/2932) aim to ensure the provision of safe work equipment and its safe use.

(NI) The Pressure Systems and Transportable Gas Containers Regulations (Northern Ireland) 1991

Pressure Systems and Transportable Gas Containers Regulations 1989

2.9 The Regulations on pressure systems apply to pneumatic air tube transport systems operating above 0.5 bar.

NHS Estates has published a Health Guidance Note, 'The Pressure Systems and Transportable Gas Containers Regulations 1989', which concerns the application of the Regulations within the NHS.

2.10 The Regulations also define the duties of the competent person: "a person or organisation responsible in law for advising on the scope of a written scheme of examination of a pressure system, drawing up or certifying the scheme, and carrying out examinations under the scheme".

(NI) The Control of Substances Hazardous to Health Regulations (Northern Ireland) 1990

Control of Substances Hazardous to Health Regulations 1994

2.11 The Control of Substances Hazardous to Health (COSHH) Regulations 1994 (SI 1988/1657) impose duties on employers to protect employees and other persons who may be exposed to substances hazardous to health and also impose certain duties on employees.

2.12 Users of pneumatic air tube transport systems should note that a "substance hazardous to health" may include a micro-organism which creates a hazard to the health of any person. Guidance on the precautions to be taken when handling micro-organisms may be found in the HSC documents 'Categorisation of pathogens according to hazard and categories of containment', (second edition 1990), compiled by the Advisory Committee on Dangerous Pathogens, and 'Safe working and the prevention of infection in clinical laboratories', compiled by the Health Services Advisory Committee.

(NI) The Reporting of Injuries, Diseases and Dangerous Occurrences Regulations (Northern Ireland) 1986

Reporting of Injuries, Diseases and Dangerous Occurrences Regulations 1985

2.13 The regulations 1985 (SI 1985/2023) came into force on 1 April 1986. Commonly known as RIDDOR, they impose duties on persons responsible for the activities of persons at work and on self-employed persons to report accidents resulting in death or major injury arising out of, or in connection with, work and to report specified dangerous occurrences. They also require certain particulars of accidents at work to be reported both to the Department of Health and also to the Health and Safety Executive, and require records to be kept.

(NI) The Manual Handling Operations Regulations (Northern Ireland) 1992

Manual Handling Operations Regulations 1992

2.14 The Regulations require employers to make an ergonomic assessment of all manual handling operations which involve a risk of injury, and to reduce the risk as far as reasonably practical. Factors to be assessed include the nature of the task, the load, the working environment and individual capability.

2.15 Managers should assess the risks associated with loading and unloading samples transported in the system.

(NI) The Personal Protective Equipment at Work Regulations (Northern Ireland) 1993

Personal Protective Equipment at Work Regulations 1992

2.16 Managers should assess whether the risks associated with pneumatic air tube transport systems require the use of personal protective equipment.

Electromagnetic Compatibility Regulations 1992

2.17 The Electromagnetic Compatibility Regulations 1992 (SI 1992/2372) impose requirements concerning the electromagnetic compatibility of most types of electrical and electronic apparatus which must be complied with when such apparatus is to be supplied or taken into service.

2.18 A pneumatic air tube transport system (and any ancillary equipment) is a "relevant apparatus" within the terms of the Regulations, and will have to meet standards for emission of and immunity to electromagnetic disturbance.

2.19 The Regulations do not apply to any pneumatic air tube transport system supplied or taken into service in the EC before 28 October 1992. A pneumatic air tube transport system supplied or taken into service in the UK on or before 31 December 1995 is not required to comply with the Regulations provided it complies with the requirements of the Wireless Telegraphy Acts listed in Schedule 1 of the Regulations.

2.20 Electrical supply and distribution services, including all manufactured equipment, must comply with the following legislation in all or in part as applicable:

- a. the Electricity Act 1989;
- b. the Electricity Supply Regulations 1988 (as amended 1990). These impose requirements regarding the installation and use of electric lines and apparatus of suppliers of electricity, including provisions for connections with earth. These regulations are administered by the Engineering Inspectorate of the Electrical Division of the Department of Energy and may impose requirements which are additional to those of the Electricity at Work Regulations;
- c. the Electricity at Work Regulations 1989. The principal statutory requirements for electrical safety in the workplace are the Electricity at Work Regulations 1989 (SI No 1989/635). The Regulations came into force on the 1 April 1990. The purpose of the Regulations is to require precautions to be taken against the risk of death or personal injury from electricity in work activities.

Detailed guidance on the application of the EMC Regulations in healthcare premises may be found in HTM 2014 – 'Abatement of electrical interference'.

(NI) The Electricity Supply Regulations (Northern Ireland), SI 1991/536 NI

Other responsibilities

2.21 Management has a general responsibility to ensure that the pneumatic air tube transport system is operated at a standard suitable for the purpose for which they were installed.

2.22 The transportation of drugs within the system should be controlled by a procedure which provides secure means of transfer of the drugs between the pharmacy and hospital stations.

2.23 The transportation of samples within the system should be governed by a management quality procedure covering the precautions and handling procedures to be undertaken by staff using the system. A list of items not to be transported in the system should be displayed at all workstations.

2.24 The Construction (Design and Management) Regulations 1994 (the Condam regulations) place new duties upon clients, designers and contractors to rethink their approach to Health and Safety so that it is taken into account and then coordinated and managed effectively throughout all stages of a construction project from conception, design and planning through to execution of works on site and subsequent maintenance and repair.

3.0 Functional overview

3.1 A pneumatic air tube transport system, which may be either a “point to point” or a multi-point system, is a distribution network of tubes through which carriers of various sizes containing small items are driven by air flow. The prime mover is a blower which can alter the direction of the air flow in the tube as required to move the carrier through the system. The destination of the carrier may be controlled by diverters which switch the carrier from one branch to another. A central controller ensures that carriers are routed through the network.

Types of system

Point to point

3.2 Point to point pneumatic air tube transport systems (see Figure 1) provide two-way transfer between points via a single continuous tube linking two points up to 1000 metres apart. The systems may be suitable for use in an application which requires simple operation and a dedicated link between departments, for example between an operating theatre and the pathology department.

Multi-point

3.3 Multi-point air tube systems (see Figure 2) provide full intercommunication between all stations in the network or zone. Where systems are large and traffic is heavy, the network may be split into zones. This allows local transport of carriers in each zone, as well as transfer to another zone, when required. This type of system is used in a large hospital, with, for example, the pathology and the pharmacy departments being in separate zones.

Tubing

3.4 The most widely used tube for hospital systems is uPVC of size 110 mm diameter; however, other sizes are available.

3.5 The tubing must have a large bending radius (650 mm to 800 mm) to allow the carriers to negotiate the bends and care is required in routing the tubing through the hospital. The majority of systems are fitted into existing hospitals where routes which can accommodate suitable tubing and the maximum bending radius are fairly limited. New build hospitals may take into account the space requirements for the tube systems during the design process, and allow greater flexibility in choosing a tube bending radius.

Blower

3.6 The blower size will be determined by the maximum carrier weight, tube diameter, length of tube and system operating velocity. In complex sites multi-zone systems are generally more practical.

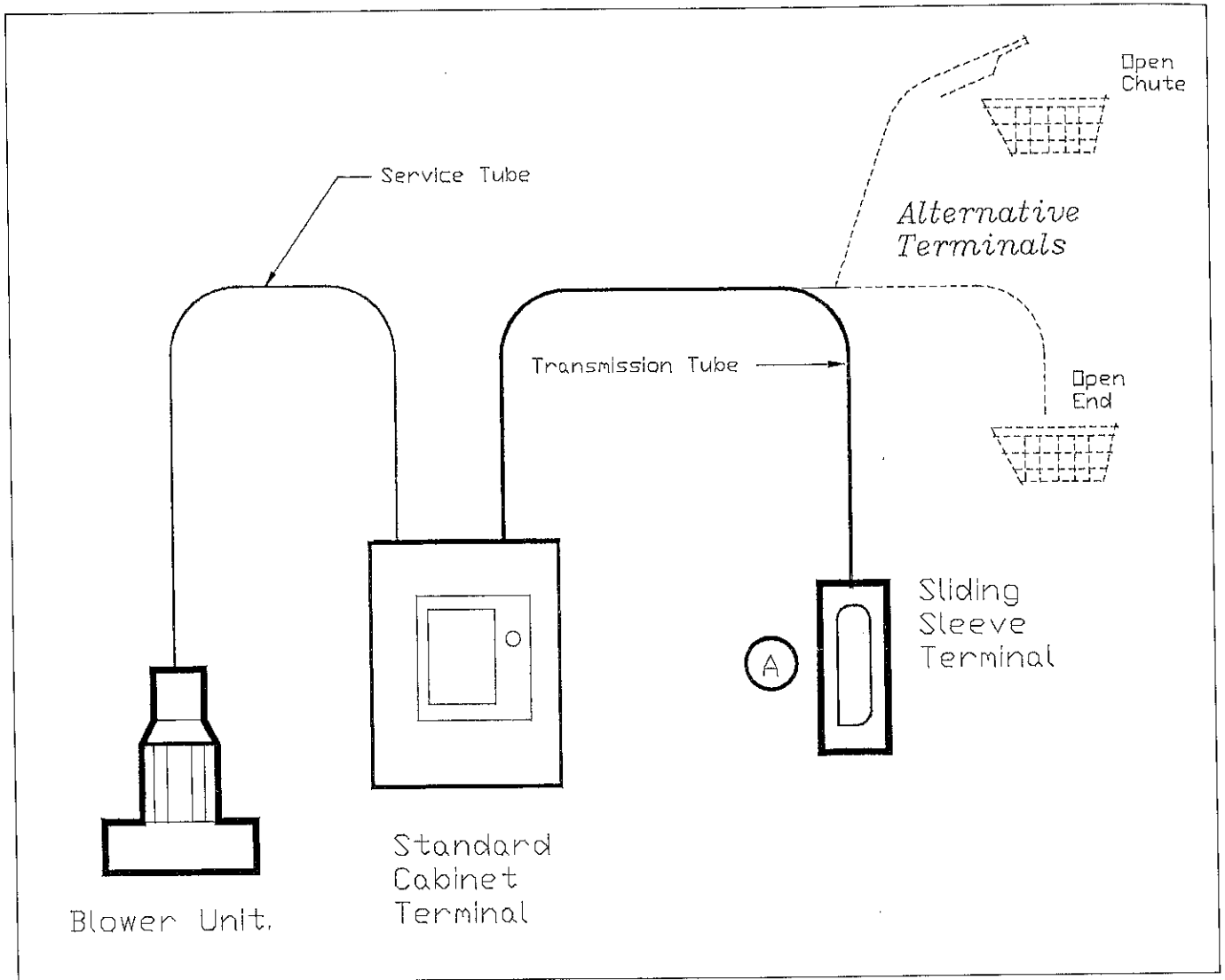


Figure 1 Point-to-point system

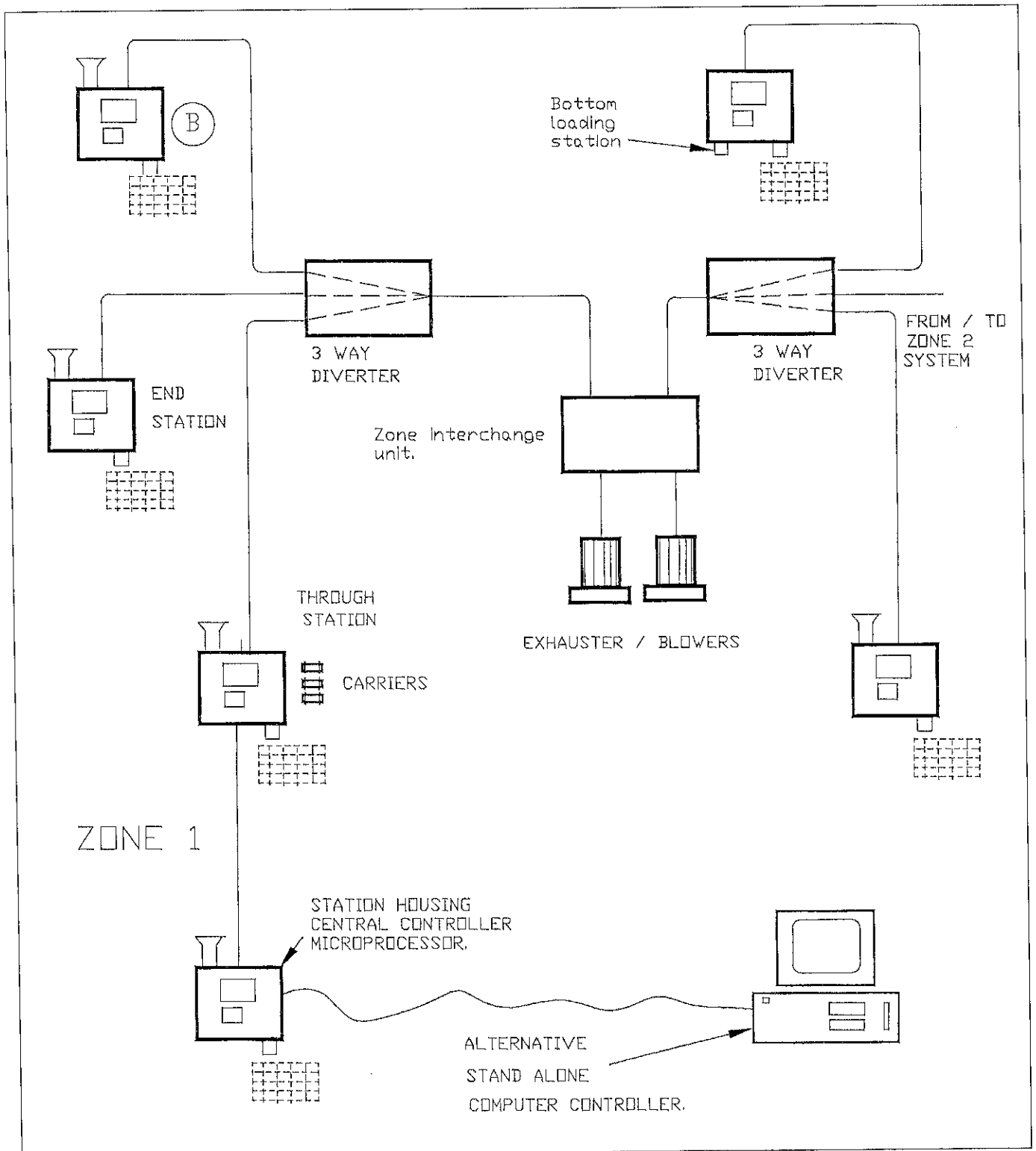


Figure 2 Multi-point system

Weight limits

3.7 Carriers can transport packages up to 1.5 kg although heavier packages may be conveyed if required subject to the manufacturer's recommendation.

System operation

3.8 The material to be transported is loaded into a carrier which is then placed in the tube at the send station. A destination station address is entered via a keypad and the carrier is then sent automatically through the network of transmission tubing to the destination. Although travelling at a speed of 5–6 metres per second, fragile items may be transported safely: carriers are accelerated gradually, and arrival at the destination is cushioned by a gentle braking system.

Travel times

3.9 The time taken from keying in the destination station to reception depends on the distance between the stations but will normally be one to three minutes, with a maximum of 15 minutes between stations in large systems.

3.10 The control transfer system determines the best possible route for carriers and automatically queues them for transmission at the earliest opportunity. The carrier journey time is normally much quicker than manual transfer, and the pneumatic air tube transport system provides an efficient means of transferring materials, without the need to use trained medical staff or porters.

3.11 Each receiving station may have a locked cabinet into which the carrier is deposited, a feature that is recommended when the system is used to transport prescription drugs.

3.12 If considered necessary, carriers may be specially labelled for use for specific items, such as drugs or pathology samples, or for a particular department to ensure that they are returned to the appropriate terminal as soon as possible. This may also serve to prevent any possibility of cross contamination from pathology samples being transported in the same carriers as pharmacy items. The use of sealed containers however may be considered adequate protection for the purpose.

Advantages and disadvantages

3.13 The advantages and disadvantages of pneumatic air tube transport systems may be summarised as follows:

Advantages

- Faster turnaround time for transported items
- Service available 24 hours a day
- Productivity savings allow more time to provide direct patient care
- Reduction in inter-departmental movements of staff
- Increased productivity and efficiency

Disadvantages

Limited capacity (although majority of samples will be capable of transport in system)

Manual backup option required in event of system failure (pneumatic systems have proved reliable)

Risk of infection and cross-contamination (use of sealed container can minimise this risk)

Reduced security in transfer of drugs (controlled dispatch of drugs with code to release carrier)

The disadvantages may not be significant, as briefly outlined in brackets after each item.

Control system

3.14 The system should be controlled by a computer or microprocessor and should include the following functions:-

- a. send/receive transaction between stations;
- b. system self-test;
- c. system status information;
- d. automatic purging cycle;
- e. system software re-configuration;
- f. continuous polling of all stations;
- g. system send/receive priorities (urgent items);
- h. forward address list (maintenance of stations);
- j. manual control (receiving of carriers etc);
- k. system purge (push/pull facility);
- m. PIN security system.

Optional features

3.15 The system may also incorporate some or all of the following features:

- a. carrier storage: redistribution of carrier to other stations; redistribution of carrier to point of maximum deficit;
- b. management status/traffic/alarm reports: print-out;
- c. zoned network system: large installations;
- d. visual/audible indication: to nominated/specific staff members;
- e. pharmacy security drug transfer system: secure station to station transfer; high/low order destination; high = secure transaction; low = non-secure transaction.

General installation considerations

3.16 The following points should be considered before installing a pneumatic air tube transport system:-

- a. current volume of traffic between departments;
- b. type of samples to be transported;
- c. size of samples to establish carrier size most suitable. The carrier size will govern the radius of bends used in the installation. A list of carrier sizes is given in the Design considerations and Good practice guide of this HTM;
- d. number of stations, their location and links. This will determine type of system required, that is, point to point or multi-point network;
- e. plantroom location(s) for blower(s) with 3-phase supply;
- f. operational policy on security for drug transfer;
- g. items that should not be transported in system;
- h. system expandability.

3.17 The following brief notes illustrate how pneumatic air tube transport systems are used in various hospitals:

- a. Bristol: a four station system provides a link for transferring drugs, blood and pathology samples between the maternity hospital and the Bristol Royal Infirmary, which are approximately 500 metres apart. The system is capable of transferring actual blood bags;
- b. Royal Marsden Hospital, London: the system is used to transfer tissue samples direct from the operating theatre to the pathology laboratory for immediate analysis. The system has a High Efficiency Particulate Absolute (HEPA) filter through which all incoming air is drawn;
- c. Cheltenham General Hospital: the hospital is served by a four-zone multi station system with the central control computer housed in the pathology department reception. The system has been extended and upgraded over a number of years and now has approximately 28 stations linking the majority of the departments and wards in the hospital.

4.0 The suitability of products to be transported

4.1 A survey carried out in 1987 indicated that there was no deterioration in the samples travelling at speeds of up to 15 metres per second. Other reports indicate that with samples travelling at speeds of 6 metres per second, no deterioration in sample quality can be detected. This is of particular importance when test analysis can be altered by haemolysis. In this context, however it should be noted that sample deterioration is generally caused by rapid acceleration and deceleration, not the speed with which the sample travels within the system. This is recognised by most manufacturers of pneumatic systems, who ensure gradual acceleration and deceleration with an air cushioned soft carrier arrival station.

4.2 The modern pneumatic air tube transport systems with velocity restricted to 5 metres per second for fragile samples and controlled deceleration have eliminated the sample problems identified with some early systems. A recent study clearly shows that all routine analyses in biochemistry and full blood counts in haematology show no significant difference when transported by pneumatic tube at 7.5 metres per second, when compared with paired samples from messenger delivery. A similar comparative study on blood gases was also performed and once again no significant difference could be identified in the results.

4.3 The use of the pneumatic air tube transport system for the delivery of microbiology samples including blood culture bottles, presents no problem in sample quality and improves the timeliness of specimen arrival; thus ensuring better cultural relativity between organism types.

4.4 It is also possible to send small histopathology samples providing care is taken to ensure sample containers are leak-proof.

4.5 Reports from the United States indicate that it is safe to transport blood products from the blood transfusion laboratory to the theatre using modern pneumatic air tube transport systems.

4.6 The items carried in a hospital system vary but generally include:

Pathology:

blood samples
urine samples
culture swabs
stools
blood cultures
spinal fluids
frozen section
radioactive blood samples
laboratory test results (may also be sent via computer network);

Pharmacy:

intravenous 500 ml to 1000 ml with admixtures
protein based drugs
general pharmaceutical
patient TTD drugs
controlled drugs
aerosol medications
cytotoxic drugs (in prepared syringes);

General:

samples
surgical instruments
X-ray films
medical records
menu cards.

5.0 Security

5.1 The need for security must be carefully weighed against the need for rapid access to the system, especially in an emergency situation when time delays can play a crucial part in patient outcome. As a general rule the send/receive stations should be located in an area away from the public, but in a convenient location for staff use. This could be, for example, inside a ward or theatre cluster where access can be restricted. The baskets may be lockable with the key under the control of the nursing staff.

5.2 The system can also provide varying degrees of security from a simple lockable send/receive station to security coded access.

5.3 The facility to isolate stations from the system is available on most systems. This has advantages if areas are to be left unattended for predefined periods, or for system maintenance.

5.4 It is generally more secure for samples to be delivered directly from point to point using pneumatic air tube transport systems, rather than by a messenger service. The number of lost and mislaid samples is reduced under the pneumatic air tube transport system.

6.0 Use of pneumatic tubes by pathology

General

6.1 Pathology laboratories are coming under pressure to review the delivery of their services to customers. This is a result of increased financial pressure from within their own organisations and commercial competition from external organisations. Another significant factor is the debate centred around the need for patient-focused care and whether or not there is still a requirement for a central hospital laboratory on site or whether sample testing can be devolved to clinical areas. The key factor in this discussion is the turnaround time for results, which requires the strategic management of the test process. The test process comprises three elements:

- a. **pre-analytical phase:**
test ordering;*
venepuncture;
specimen identification;
specimen transportation;*
laboratory reception;*
- b. **analytical phase:**
sample preparation and analysis;
- c. **post-analytical phase:**
result interpretation;
transfer of result to clinician/requester.*

* areas where pneumatic tube communications can improve efficiency and thus competitive advantage.

Reasons for improved efficiency

Test ordering

6.2 The effectiveness of the venesection service can be greatly improved if the laboratory manager knows, prior to deploying venesection staff, what demands any individual customer is likely to make that day. This can be achieved by wards and departments sending their requests for venesection early in the morning via the pneumatic air tube transport system to a central point, thus enabling the laboratory to send the correct number of venesectors to any area, and thus maximising the use of its resources.

Specimen transportation

6.3 The timeliness of specimen delivery to the laboratory is greatly improved as samples can be despatched to the laboratory immediately after being taken, or in batches as each individual area is completed. This enables venesectors to continue taking samples on the ward, whilst enabling the laboratory to spread its workload, as it has a constant supply of samples. It also dispenses with the large batch of samples that puts unnecessary pressure on the analytical system for short periods of time, whilst leaving expensive capital equipment under utilised for long periods. Considerable time delays can also occur when medical and nursing staff take samples outside the normal venesection service times unless there is an effective way of getting samples to the laboratory. This often involves urgent specimens in an "out of hours" situation when staffing numbers are at a minimum and work pressures are at their highest. A recent survey at one hospital indicated that up to 64% of staff delivering samples to the laboratory were ward based and that 52% of samples took between one and two hours to arrive at the laboratory. The subsequent installation of a pneumatic air tube transport system at strategic points throughout the hospital virtually eliminated sample delivery by ward staff and significantly reduced the time delay in samples reaching the laboratory. The consequences were greatly reduced result turnaround time, better patient care on the wards and a general improvement in the use of valuable resources.

Laboratory reception

6.4 Once a sample has arrived in the laboratory main reception, there is often a delay in the sample being forwarded to the appropriate department for analysis. The installation of a dedicated pneumatic air tube transport system between the main laboratory reception and individual departments can radically reduce this bottle neck.

Transfer of results to clinician/requester

6.5 Once samples have been analysed, and the results authorised and printed, delays can often occur in the despatch of results to the clinician/requester via the traditional hospital messenger service. The use of an air tube transport system can greatly reduce transfer times.

References and bibliography

Acts and Regulations

Health and Safety at Work etc Act. HMSO 1974.

The Electricity Act 1989. HMSO.

SI 3140:1994 The Construction (Design and Management) Regulations. HMSO 1994.

SI 3246:1994 Control of Substances Hazardous to Health (COSHH) Regulations. HMSO 1994.

SI 374:1990 Control of Substances Hazardous to Health (COSHH) (Northern Ireland) Regulations. HMSO 1990.

SI 1057:1988 The Electricity Supply Regulations. HMSO 1988.

SI 390:1990 The Electricity Supply Regulations (Amendment). HMSO 1990.

SI 2961:1992 The Electricity Supply Regulations (Amendment). HMSO 1992.

SI 536:1991 The Electricity Supply (Northern Ireland) Regulations. HMSO 1991.

SI 2372:1992 The Electromagnetic Compatibility Regulations. HMSO 1992.

SI 1039:1978 (NI 9) Health and Safety at Work (Northern Ireland) Order. HMSO 1978.

SI 2051:1992 The Management of Health and Safety at Work Regulations. HMSO 1992.

SI 459:1992 The Management of Health and Safety at Work Regulations (Northern Ireland). HMSO 1992.

SI 2793:1992 The Manual Handling Operations Regulations. HMSO 1992.

SR 535:1992 The Manual Handling Operations Regulations (Northern Ireland). HMSO 1992.

SI 2966:1992 The Personal Protective Equipment at Work Regulations. HMSO 1992.

SI 20:1993 The Personal Protective Equipment at Work Regulations (Northern Ireland). HMSO 1993.

SI 3139:1992 The Personal Protective Equipment (EC Directive) Regulations. HMSO 1992.

SI 3074:1993 Personal Protective Equipment at Work Regulations (EC Directive) (Amendment). HMSO 1993.

SI 2169:1989 Pressure Systems and Transportable Gas Containers Regulations. HMSO 1989.

SI 471:1991 Pressure Systems and Transportable Gas Containers (Northern Ireland) Regulations. HMSO 1991.

SI 2932:1992 The Provision and Use of Work Equipment Regulations. HMSO 1992.

SR 19:1993 The Provision and Use of Work Equipment Regulations (Northern Ireland). HMSO 1993.

SI 2023:1985 Reporting of Injuries, Diseases and Dangerous Occurrences Regulations. HMSO 1985.

SI 247:1986 Reporting of Injuries, Diseases and Dangerous Occurrences (Northern Ireland) Regulations. HMSO 1986.

SI 3004:1992 The Workplace (Health, Safety and Welfare) Regulations. HMSO 1992.

SR 37:1993 The Workplace (Health, Safety and Welfare) Regulations (Northern Ireland). HMSO 1993.

NHS Estates publications

National Health Service Model Engineering Specifications. NHS Estates, 1993, 1995. (2 vols electrical, 2 vols mechanical)

Health Guidance Note – The Pressure Systems and Transportable Gas Containers Regulations 1989. NHS Estates, HMSO 1989

Health Technical Memorandum 2014 – Abatement of electrical interference

Firecode publications

Policy and principles. NHS Estates, HMSO 1994.

Nucleus fire precautions recommendations. Department of Health, HMSO 1989.

Directory of fire documents. Department of Health, HMSO 1987.

HTM 81 – Fire precautions in new hospitals. DHSS, HMSO 1987.

HTM 81 Supplement 1 – Fire precautions in new hospitals. NHS Estates, HMSO 1993.

HTM 82 – Alarm and detection systems. NHS Estates, HMSO 1989.

HTM 83 – Fire safety in healthcare premises: general fire precautions. NHS Estates, HMSO 1994.

HTM 85 – Fire precautions in existing hospitals. NHS Estates, HMSO 1994.

HTM 86 – Fire risk assessment in hospitals. NHS Estates, HMSO 1994.

HTM 87 – Textiles and furniture. NHS Estates, HMSO 1993.

HTM 88 – Fire safety in health care premises. DHSS, HMSO 1986.

Fire Practice Note 1 – Laundries . Department of Health, HMSO 1987.

Fire Practice Note 2 – Storage of flammable liquids. Department of Health, HMSO 1987.

Fire Practice Note 3 – Escape bed lifts. Department of Health, HMSO 1987.

Fire Practice Note 4 – Hospital main kitchens. NHS Estates, HMSO 1994.

Fire Practice Note 5 – Commercial enterprises on hospital premises. NHS Estates, HMSO 1992.

Fire Practice Note 6 – Arson prevention and control in NHS healthcare premises. NHS Estates, HMSO 1994.

Health and Safety Commission publications

Categorisation of pathogens according to hazard and categories of containment. Advisory Committee on Dangerous Pathogens, Health and Safety Commission. 2nd edition, HMSO 1990.

Safety in health service laboratories. Safe working and the prevention of infection in clinical laboratories. Health Services Advisory Committee, Health and Safety Commission, HMSO 1991.

British Standards

BS7671:1992 Requirements for electrical installations. IEE wiring regulations. Sixteenth edition.

Bibliography

Keshigegian, AA, Bull, GE **Evaluation of a soft-handling computerised pneumatic tube specimen delivery system: effects on analytical results and turnaround time.** *American Journal of Clinical Pathology.* **97 (4)**, 1992, pp 535–540.

Emergency transport of as-1 red cell units by pneumatic tube systems. *Trauma Quarterly,* **(30)** 1990, pp 346–348.

Use of pneumatic tube system for delivery of blood bank products and specimens. *Transfusion* **(27)**, 1987.

Other publications in this series

(Given below are details of all Health Technical Memoranda available from HMSO. HTMs marked (*) are currently being revised, those marked (+) are out of print. Some HTMs in preparation at the time of publication of this HTM are also listed.)

- 1 Anti-static precautions: rubber, plastics and fabricst
- 2 Anti-static precautions: flooring in anaesthetising areas (and data processing rooms), 1977.
- 3 –
- 4 –
- 5 Steam boiler plant instrumentation†
- 6 Protection of condensate systems: filming aminest
- 2007 Electrical services: supply and distribution, 1993.
- 8 –
- 2010 Sterillizers, 1994, 1995.
- 2011 Emergency electrical services, 1993.
- 12 –
- 13 –
- 2014 Abatement of electrical interference, 1993.
- 2015 Bedhead services, 1994, 1995.
- 16 –
- 17 Health building engineering installations: commissioning and associated activities, 1978.
- 18 Facsimile telegraphy: possible applications in DGHst
- 19 Facsimile telegraphy: the transmission of pathology reports within a hospital – a case study†
- 2020 Electrical safety code for low voltage systems, 1993.
- 2021 Electrical safety code for high voltage systems, 1993, 1994.
- 2022 Medical gas pipeline systems, 1994.
- 2023 Access and accommodation for engineering services*
- 2025 Ventilation in healthcare premises, 1994.
- 26 Commissioning of oil, gas and dual fired boilers: with notes on design, operation and maintenance†
- 2027 Hot and cold water supply, storage and mains services, 1995
- 28 to 39 –
- 2040 The control of legionellae in healthcare premises – a code of practice, 1993.
- 41 to 49 –
- 2050 Risk assessment in the NHS estate, 1994.
- 51 to 53 –
- 2055 Telecommunications (telephone exchanges), 1994.

Component Data Base (HTMs 54 to 80)

- 54.1 User manual, 1993.
- 55 Windows, 1989.
- 56 Partitions, 1989.
- 57 Internal glazing, 1995.
- 58 Internal doorsets, 1989.
- 59 Ironmongery†
- 60 Ceilings, 1989.
- 61 Flooring*
- 62 Demountable storage systems, 1989.
- 63 Fitted storage systems, 1989.
- 64 Sanitary assemblies*
- 65 Health signs*
- 66 Cubicle curtain track, 1989.
- 67 Laboratory fitting-out system, 1993.
- 68 Ducts and panel assemblies, 1993.
- 69 Protection, 1993.
- 70 Fixings, 1993.
- 71 Materials management modular system*
- 72 to 80 –

Firecode

- 81 Firecode: fire precautions in new hospitals*
- 81 Supp 1 1993.
- 82 Firecode: alarm and detection systems, 1989.
- 83 Fire safety in healthcare premises: general fire precautions, 1994.
- 85 Firecode: fire precautions in existing hospitals, 1994.
- 86 Firecode: fire risk assessment in hospitals, 1994.
- 87 Firecode: textiles and furniture, 1993.
- 88 Fire safety in health care premises: guide to fire precautions in NHS housing in the community for mentally handicapped/ill people, 1986.

New HTMs in preparation

- 2024 Lifts
- 2030 Washers for sterile production

Health Technical Memoranda published by HMSO can be purchased from HMSO bookshops in London (post orders to PO Box 276, SW8 5DT), Edinburgh, Belfast, Manchester, Birmingham and Bristol, or through good booksellers. HMSO provide a copy service for publications which are out of print; and a standing order service.

Enquiries about Health Technical Memoranda (but not orders) should be addressed to: NHS Estates, Department of Health and Marketing, 1 Trevelyan Square, Boar Lane, Leeds LS1 6AE.

About NHS Estates

NHS Estates is an Executive Agency of the Department of Health and is involved with all aspects of health estate management, development and maintenance. The Agency has a dynamic fund of knowledge which it has acquired during 30 years of working in the field. Using this knowledge NHS Estates has developed products which are unique in range and depth. These are described below. NHS Estates also makes its experience available to the field through its consultancy services.

Enquiries about NHS Estates should be addressed to:
NHS Estates, Marketing Unit, Department of Health,
1 Trevelyan Square, Boar Lane, Leeds LS1 6AE.
Telephone 0113 254 7000.

Some other NHS Estates products

Activity DataBase – a computerised system for defining the activities which have to be accommodated in spaces within health buildings. *NHS Estates*

Design Guides – complementary to Health Building Notes, Design Guides provide advice for planners and designers about subjects not appropriate to the Health Building Notes series. *HMSO*

Estatecode – user manual for managing a health estate. Includes a recommended methodology for property appraisal and provides a basis for integration of the estate into corporate business planning. *HMSO*

Concode – outlines proven methods of selecting contracts and commissioning consultants. Reflects official policy on contract procedures. *HMSO*

Works Information Management System – a computerised information system for estate management tasks, enabling tangible assets to be put into the context of servicing requirements. *NHS Estates*

Health Building Notes – advice for project teams procuring new buildings and adapting or extending existing buildings. *HMSO*

Health Guidance Notes – an occasional series of publications which respond to changes in Department of Health policy or reflect changing NHS operational management. Each deals with a specific topic and is complementary to a related Health Technical Memorandum. *HMSO*

Health Facilities Notes – debate current and topical issues of concern across all areas of healthcare provision. *HMSO*

Firecode – for policy, technical guidance and specialist aspects of fire precautions. *HMSO*

Capital Investment Manual Database – software support for managing the capital programme. Compatible with the Capital Investment Manual. *NHS Estates*

Model Engineering Specifications – comprehensive advice used in briefing consultants, contractors and suppliers of healthcare engineering services to meet Departmental policy and best practice guidance. *NHS Estates*

Quarterly Briefing – gives a regular overview on the construction industry and an outlook on how this may affect building projects in the health sector, in particular the impact on business prices. Also provides information on new and revised cost allowances for health buildings. Published four times a year; available on subscription direct from NHS Estates. *NHS Estates*

Works Guidance Index – an annual, fully cross-referenced index listing all NHS Estates publications and other documents related to the construction and equipping of health buildings. *NHS Estates*

Items noted "HMSO" can be purchased from HMSO Bookshops in London (post orders to PO Box 276, SW8 5DT), Edinburgh, Belfast, Manchester, Birmingham and Bristol or through good booksellers.

NHS Estates consultancy service

Designed to meet a range of needs from advice on the oversight of estates management functions to a much fuller collaboration for particularly innovative or exemplary projects.

Enquiries should be addressed to: NHS Estates Consultancy Service (address as above).

Department of Health
1 Trevelyan Square
Boar Lane
Leeds
LS1 6AE
Fax 0113 254 7299
Telephone 0113 254 7000

Dear Customer

FOLD

At NHS Estates, we constantly strive to produce publications that are relevant to the demands of the NHS and our worldwide healthcare customers.

It would help us to provide you with a better service if you could set aside a few minutes to complete the questionnaire on the reverse, fold as shown and return in a window envelope.

Win a free Health Building Note of your choice.

As a token of appreciation for taking the time to complete this card, all cards will be placed into an annual draw. The winning entry will receive a free Health Building Note of their choice.

Thank you for your comments.

John Locke
Chief Executive

There are no cash alternatives to the prize offered.

FOLD

**JOHN LOCKE
CHIEF EXECUTIVE
NHS ESTATES
FREEPOST LS 5588
LEEDS
LS1 1YY**

Publication title Date

Reader details

Name

Position

Organisation

Address

..... Postcode

Telephone

Please tick the appropriate box

	Very Good	Good	Fair	Poor
Appropriateness of subject	<input type="checkbox"/>	<input type="checkbox"/>	<input type="checkbox"/>	<input type="checkbox"/>
Met my need	<input type="checkbox"/>	<input type="checkbox"/>	<input type="checkbox"/>	<input type="checkbox"/>
Clarity of presentation	<input type="checkbox"/>	<input type="checkbox"/>	<input type="checkbox"/>	<input type="checkbox"/>
Quality of content	<input type="checkbox"/>	<input type="checkbox"/>	<input type="checkbox"/>	<input type="checkbox"/>
Value for money	<input type="checkbox"/>	<input type="checkbox"/>	<input type="checkbox"/>	<input type="checkbox"/>
Overall rating of the publication	<input type="checkbox"/>	<input type="checkbox"/>	<input type="checkbox"/>	<input type="checkbox"/>

Will you be purchasing further editions in the series? YES NO

Other comments / areas for improvement?
.....
.....

Do you have any suggested subjects for the future?
.....
.....

Do you receive copies of our quarterly Newslink newsletter? YES NO

Do you wish to receive a copy? YES NO

Have you purchased other products / services from us recently?

Please tick

Other publications	<input type="checkbox"/>	Activity DataBase	<input type="checkbox"/>
Consultancy services	<input type="checkbox"/>	Wims Software Enhancements	<input type="checkbox"/>
Other software products	<input type="checkbox"/>	Other: Please specify	<input type="checkbox"/>

Are there other ways NHS Estates can assist you?
.....
.....
.....

How did you receive your copy?

Sent/Issued by NHSE **Purchased from HMSO**

Department of Health

Scottish Office

Welsh Office

Department of Health
and Social Services
Northern Ireland

Health Technical Memorandum 2009 gives comprehensive advice and guidance on the design, installation and operation of pneumatic air tube transport systems in healthcare premises.

This volume – Management policy – outlines the overall responsibility of managers of healthcare premises and outlines their legal obligations in setting up and operating a pneumatic air tube transport system; it also summarises the technical aspects involved.



Published by HMSO and available from:

HMSO Publications Centre

(Mail, fax and telephone orders only)
PO Box 276, London SW8 5DT
Telephone orders 0171 873 9090
General enquiries 0171 873 0011
(queuing system in operation for both numbers)
Fax orders 0171 873 8200

HMSO Bookshops

49 High Holborn, London WC1V 6HB
(counter service only)
0171 873 0011 Fax 0171 831 1326
68–69 Bull Street, Birmingham B4 6AD
0121 236 9696 Fax 0121 236 9699
33 Wine Street, Bristol BS1 2BQ
0117 926 4306 Fax 0117 929 4515
9–21 Princess Street, Manchester M60 8AS
0161 834 7201 Fax 0161 833 0634
16 Arthur Street, Belfast BT1 4GD
01232 238451 Fax 01232 235401
71 Lothian Road, Edinburgh EH3 9AZ
0131 228 4181 Fax 0131 229 2734

HMSO's Accredited Agents

(see Yellow Pages)

and through good booksellers

HMSO E

ISBN 0-11-322192-4



9 780113 221929